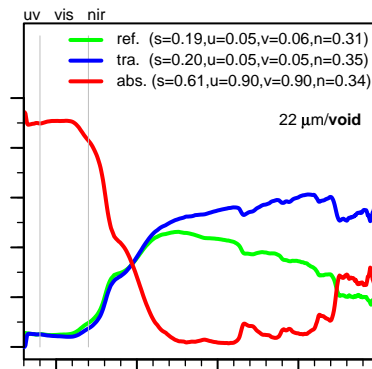
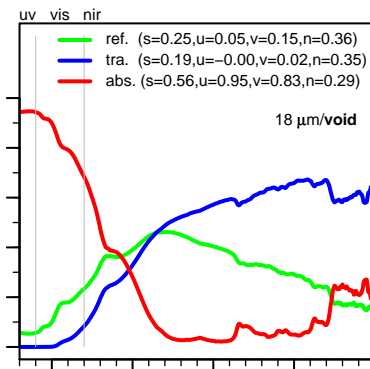
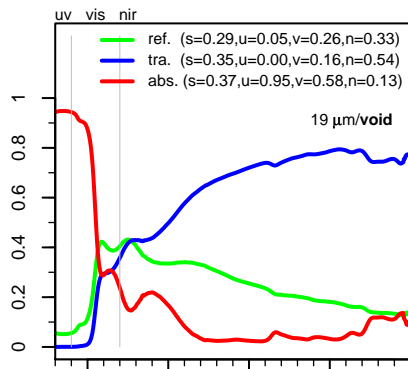
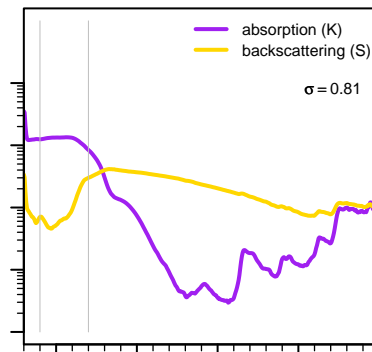
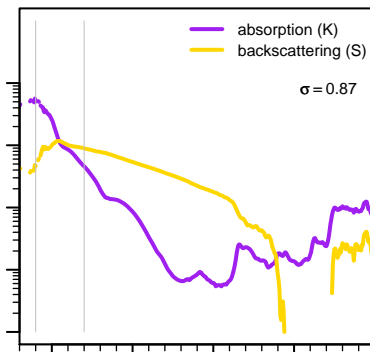
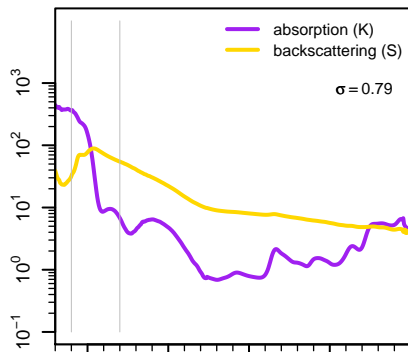


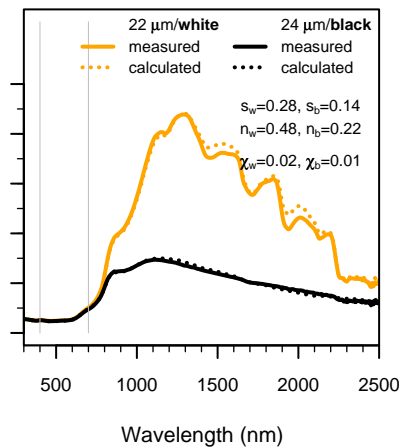
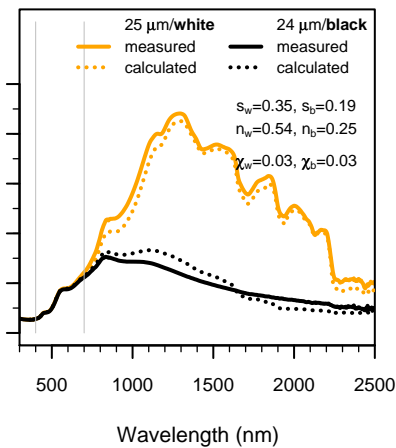
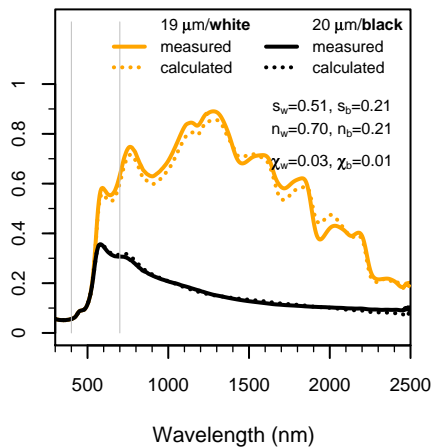
### I. Observed Film Property



### II. K-M Coefficient ( $\text{mm}^{-1}$ )



### III. Observed Film Reflectance



[Y01]  
Yellow Oxide  
Synthetic Hydrated Iron Oxide (PY 42)  
16.5% PVC  
(iron oxide yellow)

1:1 mixture  
(volume Y01:volume B11 = 1:1)

[B11]  
Chromium Iron Oxide (ii)  
Shepherd Black 411 (PBr 29)  
2.8% PVC; size 0.6  $\mu\text{m}$   
(chromium iron oxide selective black)