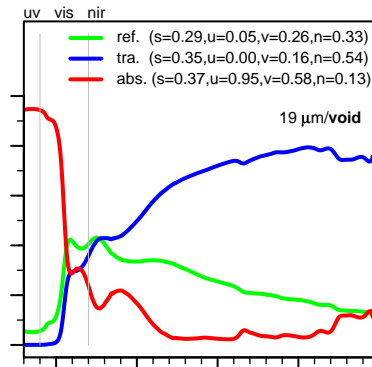
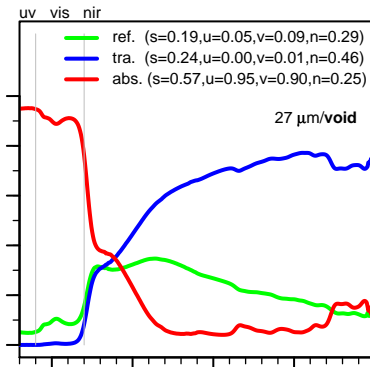
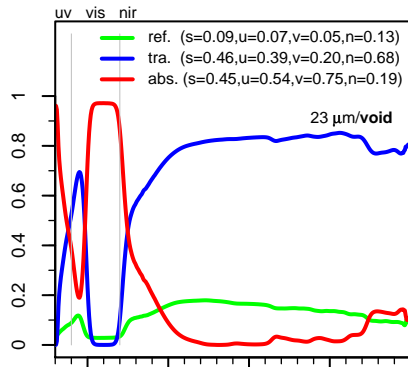
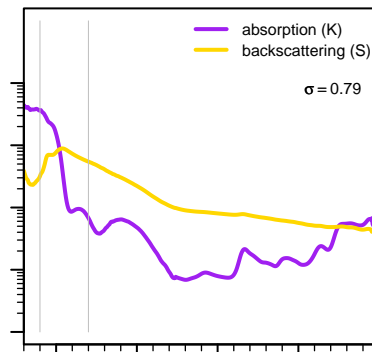
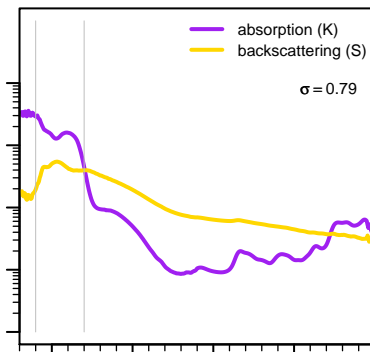
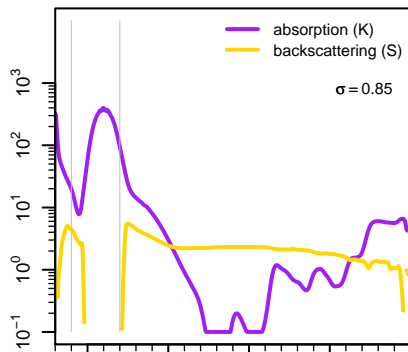


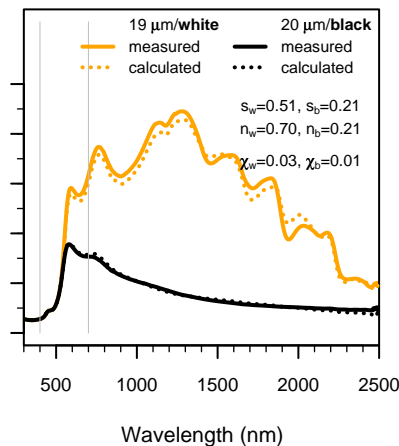
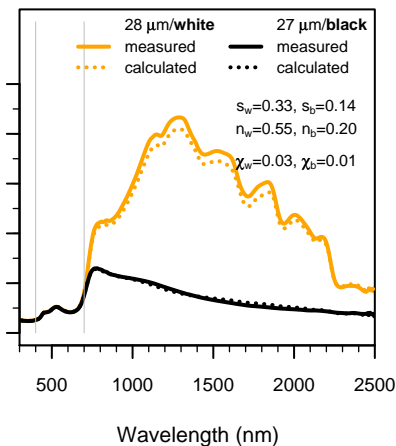
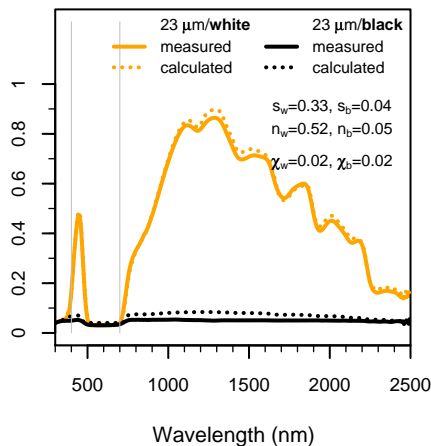
I. Observed Film Property



II. K-M Coefficient (mm^{-1})



III. Observed Film Reflectance



[U11]
 French Ultramarine Blue
 Complex Silicate of Na and Al with S (PB 29)
 24.2% PVC
 (ultramarine blue)

1:1 mixture
 (volume U11:volume Y01 = 1:1)

[Y01]
 Yellow Oxide
 Synthetic Hydrated Iron Oxide (PY 42)
 16.5% PVC
 (iron oxide yellow)